

TOTAL BILL OF MATERIAL														
	CONSTRUCTION, MAINTENANCE, & REMOVAL OF TEMP. LOSSENG & STA. 18+80.00 DETOUR LUMP SUM	REMOVAL OF EXISTING STRUCTURE @ STA. 19+14.00 - L. LUMP SUM	CLASS "A" CONCRETE	REIN. STEEL	HP 12 x 53 STEEL PILES		HP 14 x 75 STEEL PILES		CONCRETE BARRIER RAIL	BRIDGE APPROACH SLABS	ELASTOMERIC BEARINGS	PLAN RIP RAP (CLASS II) (2'-0" THICK)	3'-0" x 1'-6" PERMAN. CONC. COURED SLABS	
			CU. YDS.	LBS.	NO.	LN. FT.	NO.	LN. FT.	LN. FT.	LUMP SUM	LUMP SUM	SGR. YDS.	NO.	LN. FT.
SUPERSTRUCTURE									339.67		L.S.		44	1864.04
END BENT NO. 1			11.5	1904	6	240					L.S.	180		
BENT NO. 1			9.9	1900			6	300						
BENT NO. 2			9.9	1900			6	300						
BENT NO. 3			9.9	1850			6	270						
END BENT NO. 2			11.5	1904	6	240					L.S.	110		
DETOUR STRUCTURE												200		
TOTAL	LUMP SUM	LUMP SUM	52.7	9458	12	480	18	870	339.67	LUMP SUM	LUMP SUM	490	44	1864.04

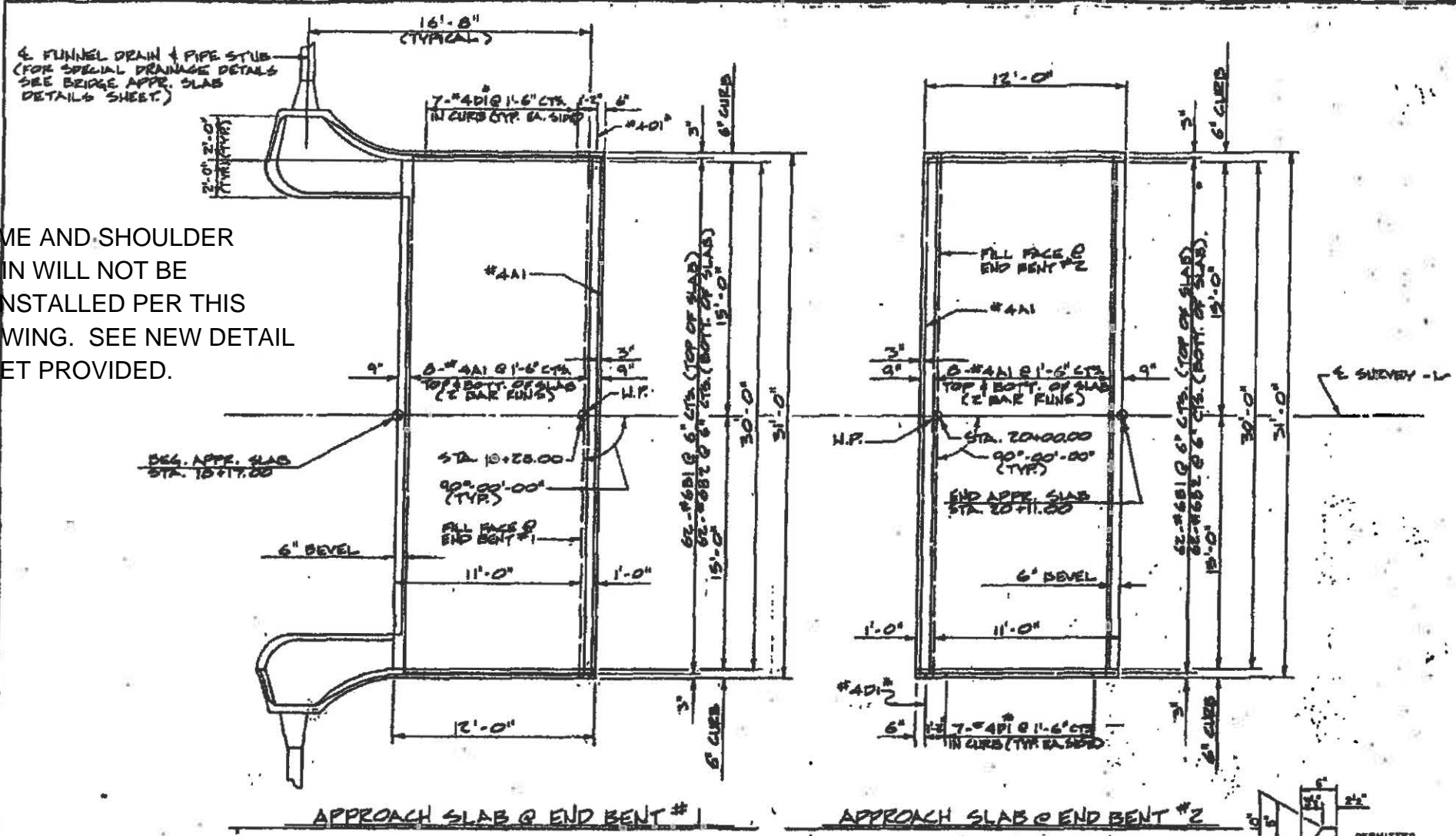
PROJECT No. B.1400501
 MAKE _____ COUNTY _____
 STATION: 19+14.00-L

STATE OF NORTH CAROLINA
 DEPARTMENT OF TRANSPORTATION
 RALEIGH
 LOCATION SKETCH
 TOTAL BILL OF MATERIAL
 OCT. 1984

REVISIONS					
NO.	BY	DATE	NO.	BY	DATE
1			2		
3			4		

SHEET NO. 52
 TOTAL SHEETS 18

FLUME AND SHOULDER DRAIN WILL NOT BE RE-INSTALLED PER THIS DRAWING. SEE NEW DETAIL SHEET PROVIDED.



NOTES
 FOR BRIDGE APPROACH SLABS, SEE SPECIAL PROVISIONS.

THE ENGINEER WILL BE RESPONSIBLE FOR ESTABLISHING ELEVATIONS ON THE APPROACH SLABS.

THE 6" COMP. A.S.C. IS TO EXTEND 10'-0" BEYOND THE SLAB AS SHOWN AND 1'-0" OUTSIDE OF EACH EDGE OF SLAB. IF SPECIAL DRAINAGE IS USED, THE 6" COMP. A.S.C. SHALL ALSO EXTEND EXTERIOR THE CONCRETE FLANGE AND 1'-0" OUTSIDE OF EACH EDGE OF CURB.

SUBDRAIN FINE AGGREGATE IS TO BE CONTINUOUS ALONG FULL FACE OF BACKFILL AND END BENT FROM OUTSIDE EDGE TO OUTSIDE EDGE OF APPROACH SLAB.

THE CONTRACTOR, AT HIS OPTION, MAY USE 6" BITUMINOUS CONCRETE BASE COURSE, TYPE NO. 10 IN LIEU OF 6" A.S.C. ANY ADDITIONAL COST DUE TO THE USE OF THIS OPTION WILL BE PAID FOR BY THE CONTRACTOR.

THE 1" EXPANSION JOINT MATERIAL IS TO BE HELD IN PLACE WITH GALVANIZED NAILS.

DOWELS MAY BE PUSHED INTO GREEN CONCRETE AFTER THE SLAB HAS BEEN SCREENED AND FLAT FINISHED EXCEPT AS NOTED ON THE PLANS.

NO DIRECT PAYMENT WILL BE MADE FOR THE TEMPORARY DRAINAGE AS SUCH WORK WILL BE CONSIDERED INCIDENTAL TO OTHER WORK BEING PAID FOR BY THE VARIOUS ITEMS IN THE CONTRACT.

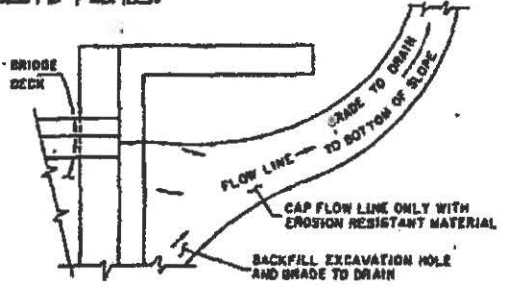
AREA BETWEEN THE STAINLESS AND APPROACH SLAB SHALL BE GRADED TO DRAIN THE WATER AWAY FROM THE FULL FACE OF THE BRIDGE.

THESE DOWELS ARE NOT INCLUDED IN THE BILL OF MATERIAL AND SHALL BE USED ONLY WHEN A CONST. JT. IS USED BETWEEN THE SLAB AND CURB. ANY ADDITIONAL COST FOR FURNISHING AND PLACING THESE DOWELS SHALL BE PAID FOR BY THE CONTRACTOR.

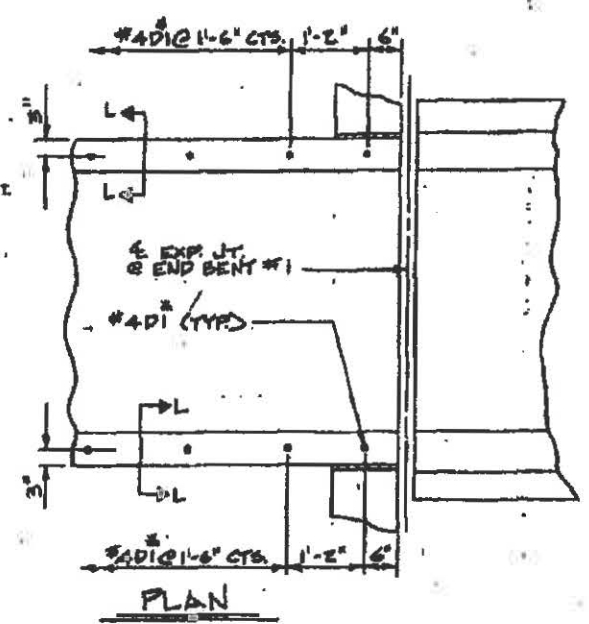
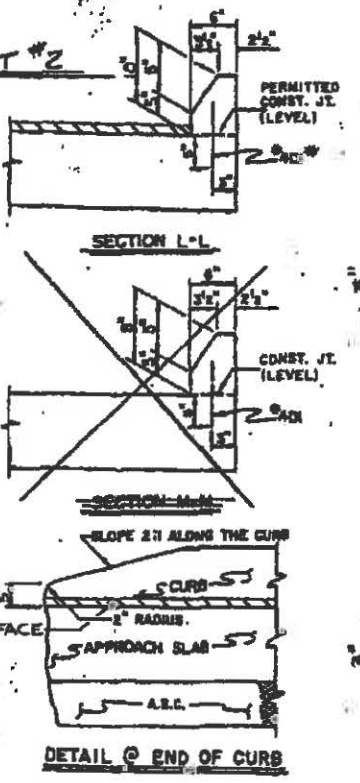
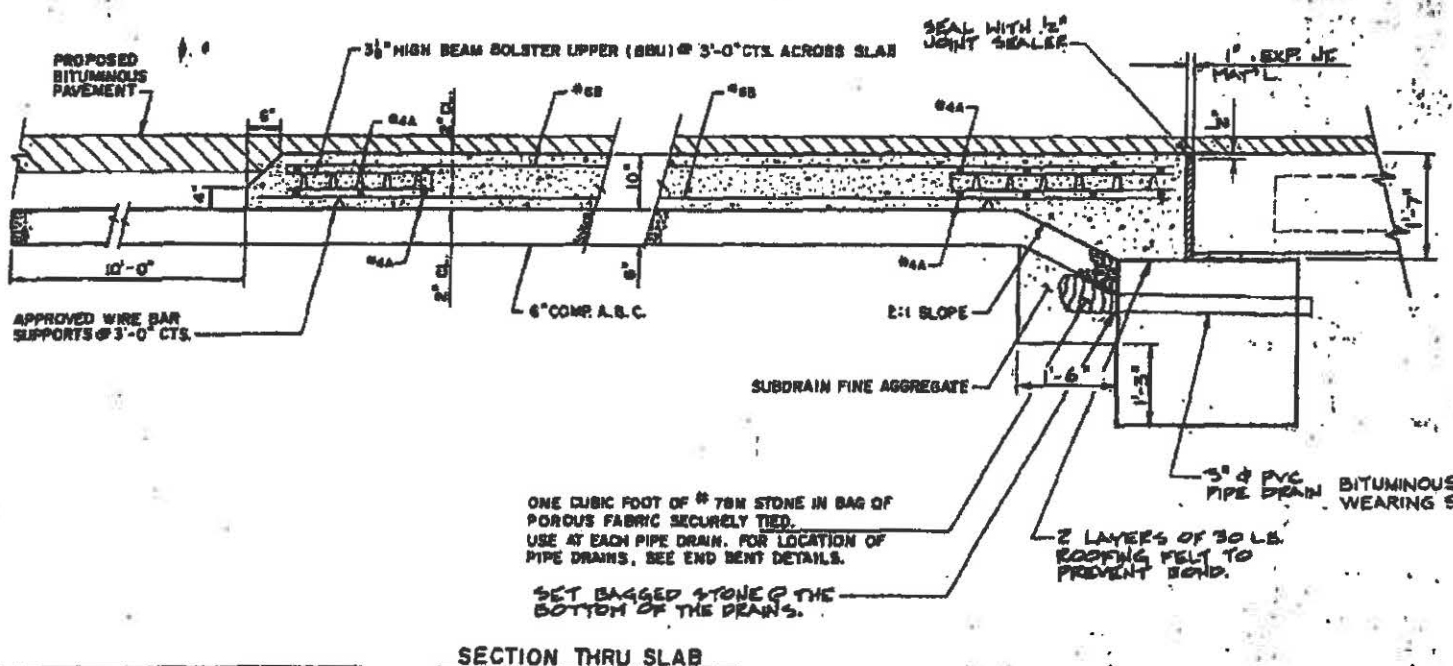
INCLUDES 2.0 C.Y. FOR CONCRETE FLUMES.

BILL OF MATERIAL					
FOR 1 APPE. SLAB (2 REQ'D)					
BAR	NO.	SIZE	TYPE	LENGTH	WEIGHT
A1	36	#4	STR.	15'-11"	383
B1	62	#6	STR.	11'-2"	1040
B2	62	#6	STR.	11'-6"	1086

REINF. STEEL - LBS. - 2309
CLASS "AA" CONCRETE
END BENT #1 - CU. YDS. - 13.1
END BENT #2 - CU. YDS. - 13.1



NOTE: IF THE APPROACH SLAB IS NOT CONSTRUCTED IMMEDIATELY AFTER THE BACKFILLING OF THE END BENT EXCAVATION, GRADE TO DRAIN TO THE BOTTOM OF THE SLOPE AND PROVIDE EROSION RESISTANT MATERIAL, SUCH AS FIBERGLASS ROVING OR AS DIRECTED BY THE ENGINEER TO PREVENT SOIL EROSION AND TO PROTECT THE AREA ADJACENT TO THE STRUCTURE. THE CONTRACTOR WILL BE REQUIRED TO REMOVE THESE MATERIALS PRIOR TO CONSTRUCTION OF THE APPROACH SLAB.



TEMPORARY DRAINAGE DETAILS

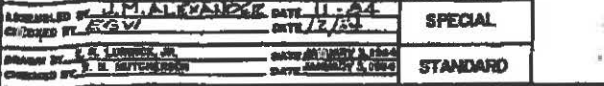
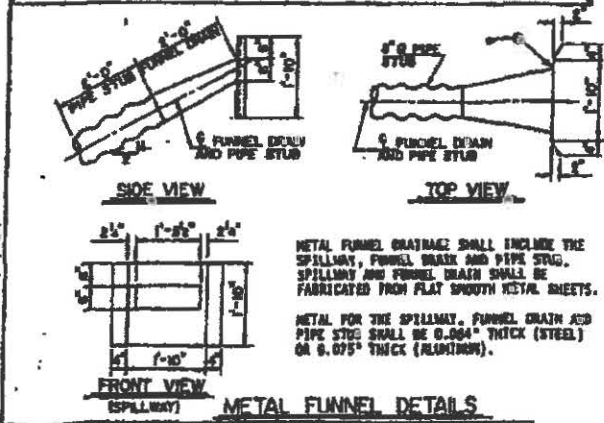
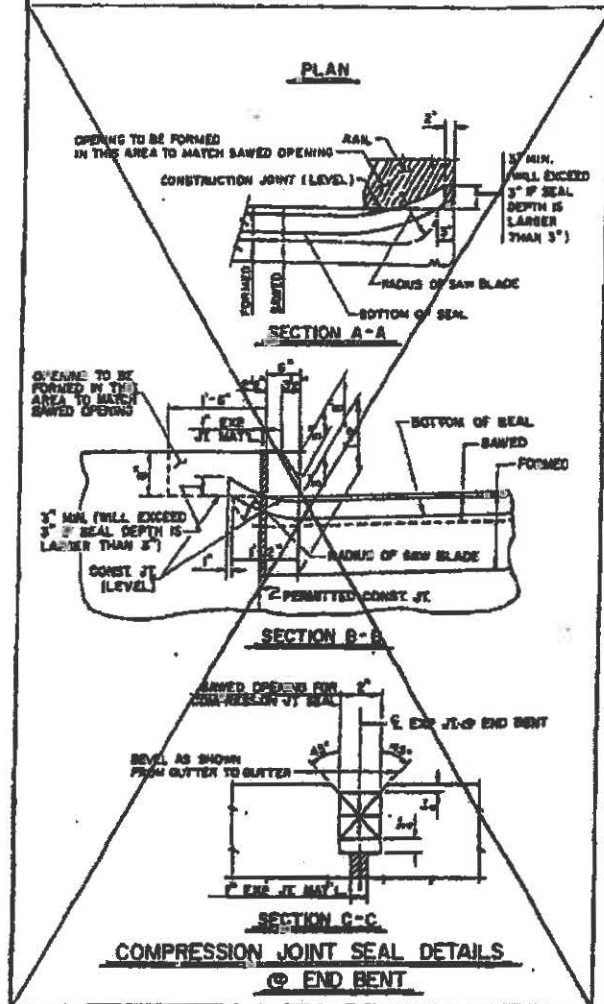
PROJECT No. 81400801
 WAKE COUNTY
 STATION: 19+14.00 - L -
 SHEET 1 OF 2

STATE OF NORTH CAROLINA
 DEPARTMENT OF TRANSPORTATION
 RALEIGH
 BRIDGE APPROACH SLAB
 FOR FLEXIBLE PAVEMENT

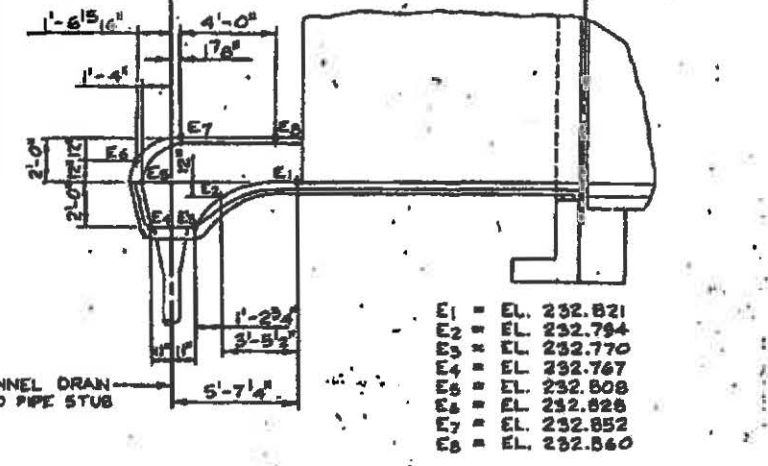
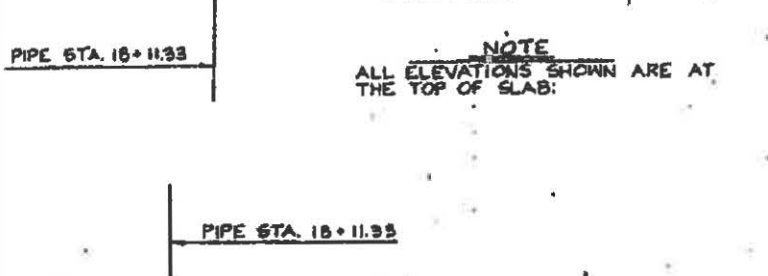
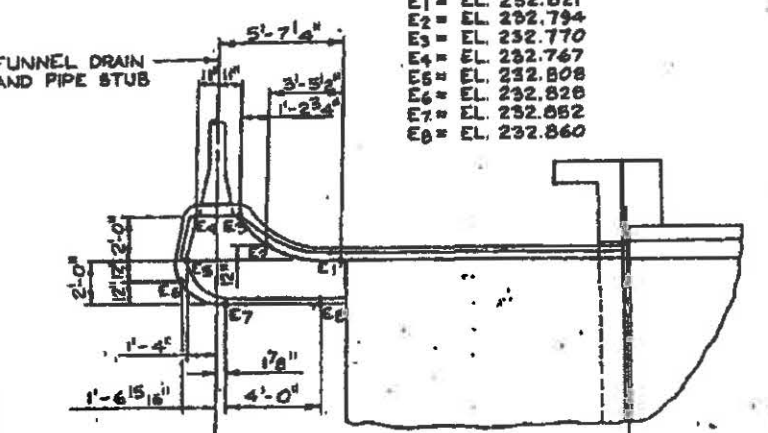
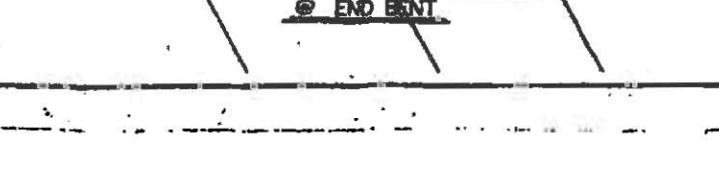
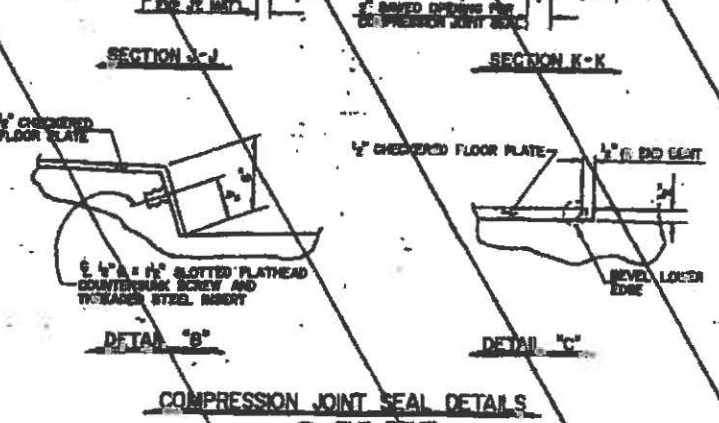
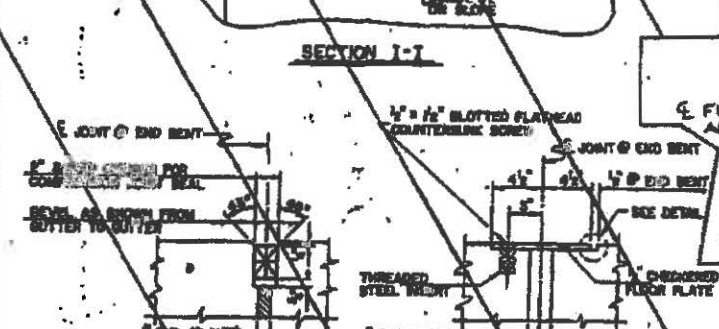
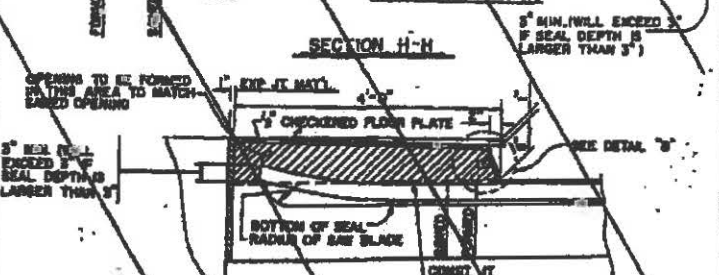
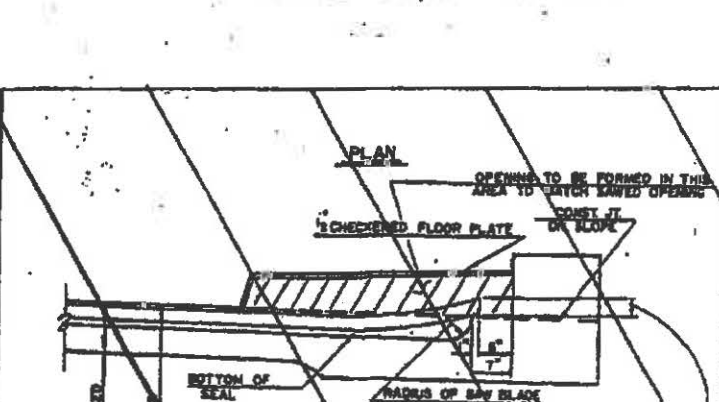
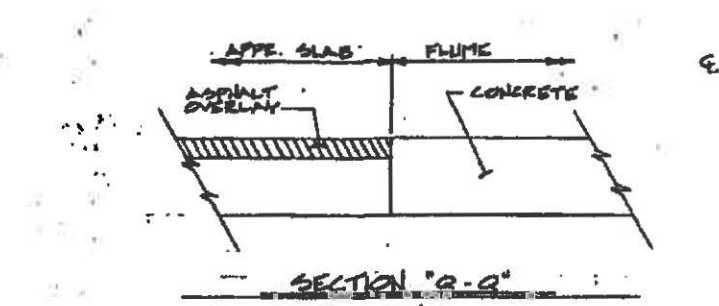
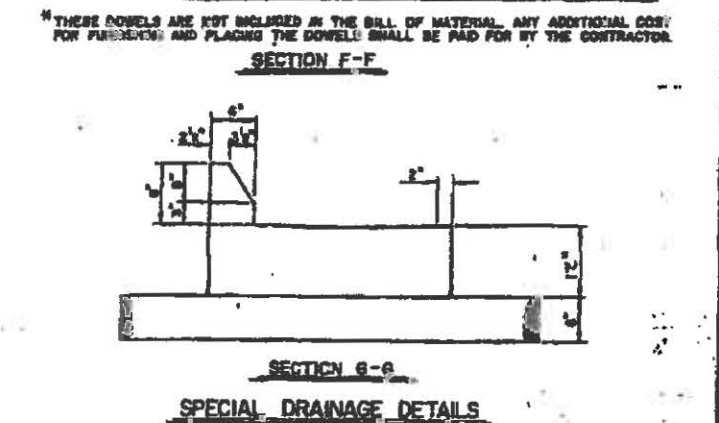
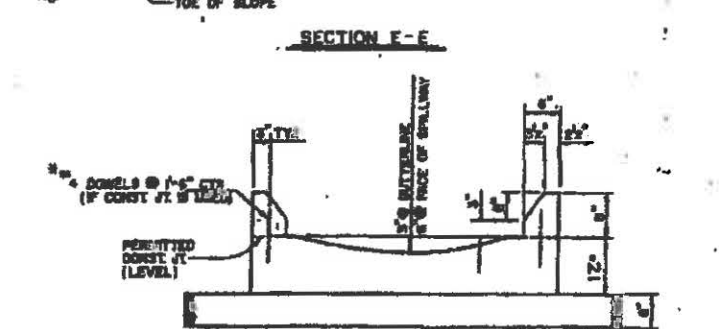
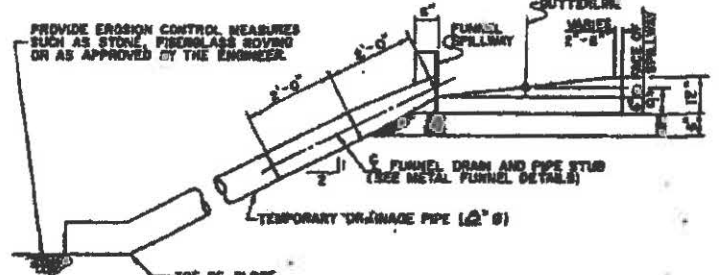
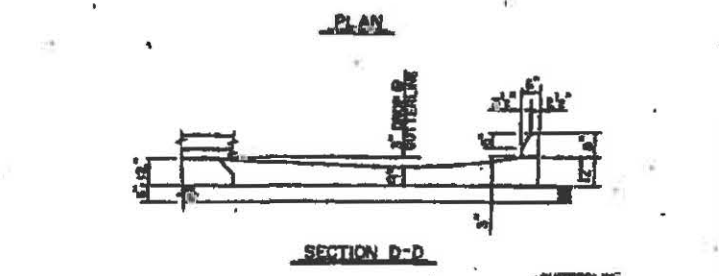
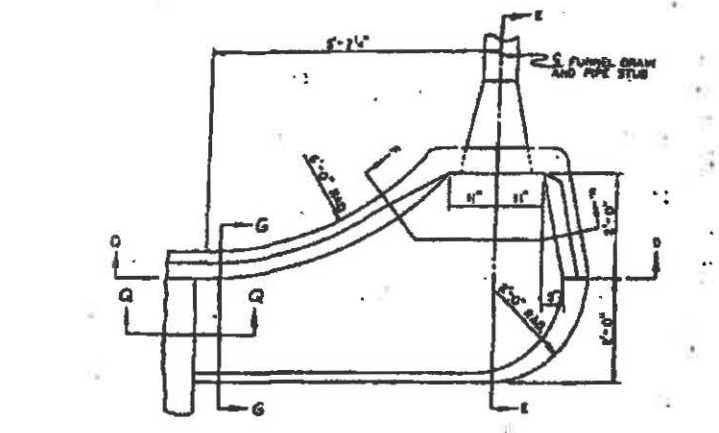
JULY		1978	
REVISIONS			
NO.	BY	DATE	DATE
1			5-15
2			18

REVISIONS
 3-28-78 BY: R.D.J. CHK'D BY: J.C.V.
 REVISIONS
 4-1-79 BY: R.D.J. CHK'D BY: R.D.J.
 REVISIONS
 7-3-79 BY: R.E.M. CHK'D BY: J.R.D.U.
 DRAWN BY: K.P. DATE: 7-71
 CHECKED BY: A.M.
 DATE: 11-82
 DATE: 12/82

RIGHT SIDE FLUME SHOWN
LEFT SIDE SPILLWAY.



ASSEMBLED BY J. M. ALKANDAR	DATE 11-24	SPECIAL
DESIGNED BY EGV	DATE 7/2/53	STANDARD
APPROVED BY E. E. LINDSEY, JR.	DATE MARCH 3, 1954	
CHECKED BY E. E. LINDSEY, JR.	DATE MARCH 3, 1954	



NOTE
ALL ELEVATIONS SHOWN ARE AT THE TOP OF SLAB.

CONSTRUCTION ELEVATIONS FOR CONCRETE FLUME

E1 = EL. 232.821
E2 = EL. 232.794
E3 = EL. 232.770
E4 = EL. 232.767
E5 = EL. 232.808
E6 = EL. 232.828
E7 = EL. 232.852
E8 = EL. 232.860

PROJECT No. B.1400801
LAKE _____ COUNTY _____
STATION 19+14.00-L
SHEET 2 OF 2

STATE OF NORTH CAROLINA
DEPARTMENT OF TRANSPORTATION
RALEIGH
STANDARD
BRIDGE APPROACH
SLAB DETAILS

MARCH 1954

NO.	BY	DATE	NO.	BY	DATE
1			2		
3			4		

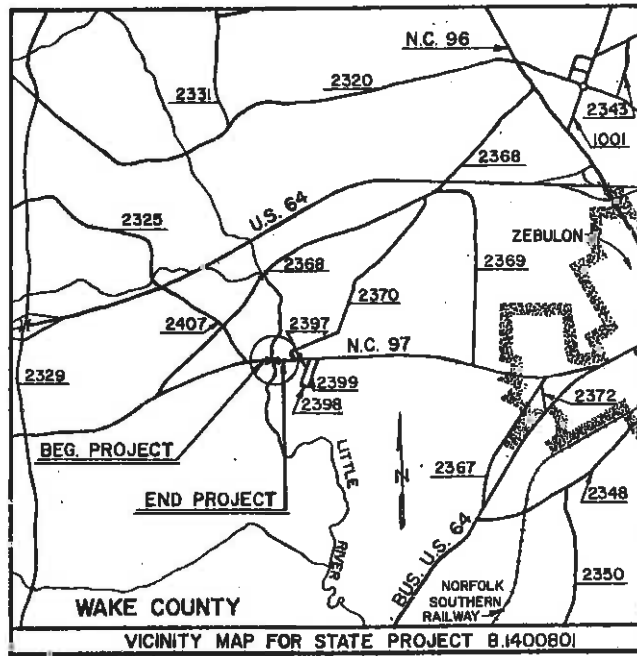
STD. NO. BAS3

STATE OF NORTH CAROLINA
 DEPARTMENT OF TRANSPORTATION
 PLAN AND PROFILE OF PROPOSED
 STATE HIGHWAY

STATE PROJ. NO.	F A PROJ. NO.	DESCRIPTION
8.1400801	BRS-6673(I)	P.E., R/W, CONST.

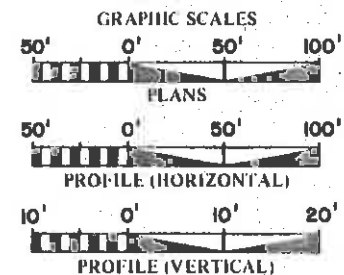
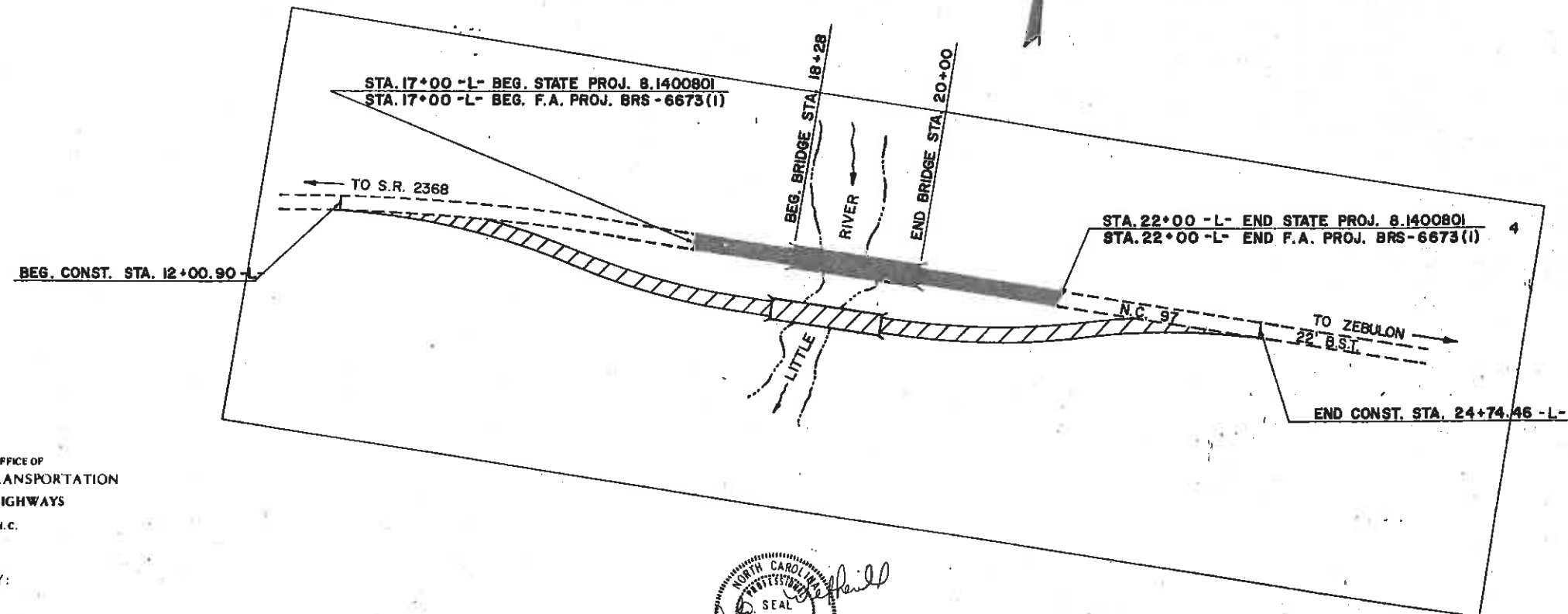
WAKE COUNTY

LOCATION: BRIDGE OVER LITTLE RIVER AND APPROACHES ON N.C. 97 APPROX. 1.5 MILES WEST OF ZEBULON, NC.
 TYPE OF WORK: GRADING, PAVING, DRAINAGE, AND STRUCTURE.



CONVENTIONAL SYMBOLS

County Line
City or Town Line
Exist. Right of Way Line & Marker
Prop. Right of Way Line & Marker
Survey Line
Property Line
Exist. Fence
Proposed Road
Existing Road
Railroad
Control of Access Line
Slope Stake Line
Bridge
Culvert
Woods
Telephone or Telegraph Pole	(EXISTING) (PROPOSED)
Tower Pole and Line
Power Pole	(EXISTING) (PROPOSED)
Easement Line
Temporary Silt Fence
Guard Rail
Sanitary Sewer Line	SS
Water Line
Gas Line	GAS
Proposed Woven Wire Fence
Proposed Chain Link Fence
Temporary Silt Ditch	TSD



DESIGN DATA

ADT	1984 = 4600
ADT	2004 = 8100
DHV	80%
D	10%
T	4%
V	55 MPH

PREPARED IN OFFICE OF
 DEPARTMENT OF TRANSPORTATION
 DIVISION OF HIGHWAYS
 RALEIGH, N. C.

PLANS PREPARED BY:

 Meritt Associates, P.C.
 RALEIGH, NORTH CAROLINA

CONTACT: C.E. KISTLER, P.E. ENGINEER COORDINATOR, N.C.D.O.T.

LETTING DATE: JUNE 18, 1985

1984 STANDARD SPECIFICATIONS



LENGTH OF ROADWAY F.A. PROJECT BRS-6673 (I) = 0.062 MI.
 LENGTH OF STRUCTURE F.A. PROJECT BRS-6673 (I) = 0.033 MI.
 TOTAL LENGTH STATE PROJECT 8.1400801 = 0.095 MI.

DIVISION OF HIGHWAYS
 STATE OF NORTH CAROLINA

APPROVED: *William G. M... Jr.* P.E.
 MANAGER (R/W) DESIGN BRANCH

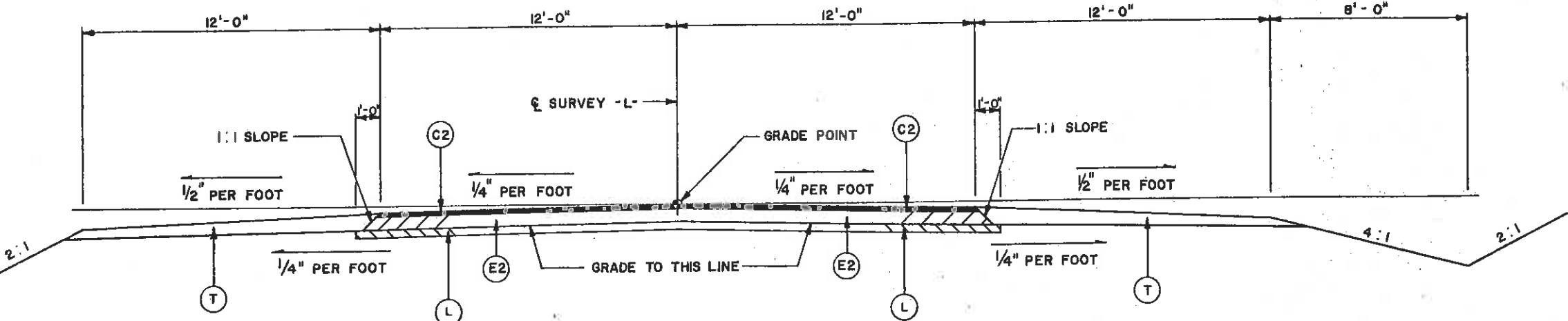
APPROVED: *A. Coleman* P.E.
 CHIEF ENGINEER - OPERATIONS

DEPARTMENT OF TRANSPORTATION
 FEDERAL HIGHWAY ADMINISTRATION

APPROVED: _____ DATE: _____
 DIVISION ADMINISTRATOR

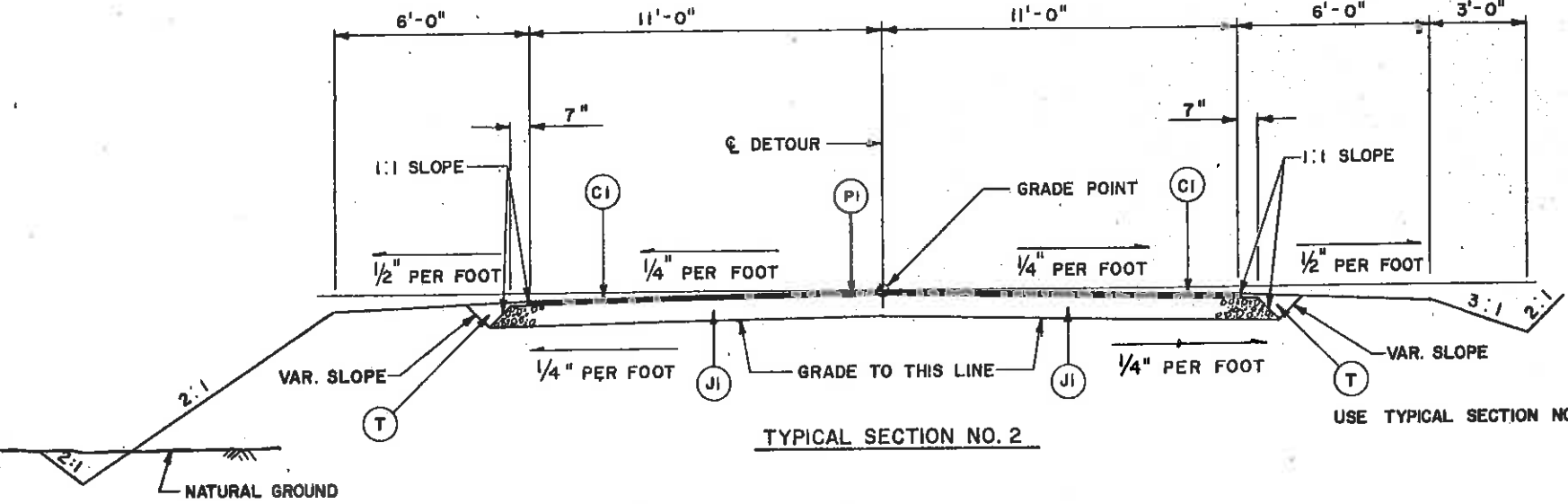
PROJECT: 8.1400801 B-1411

B.1400801		2
STATE PROJ. NO.	F & A PROJ. NO.	DESCRIPTION



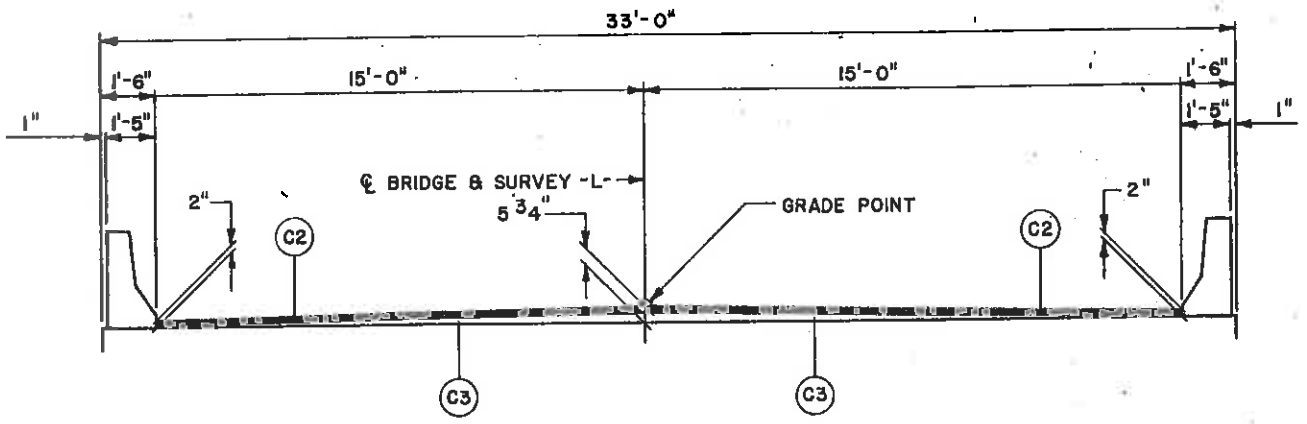
TYPICAL SECTION NO. 1

USE TYPICAL SECTION NO. 1 FROM: STA. 17+00 TO STA. 17+50 TRAN. FROM EXISTING WIDTH TO PROPOSED 24'-0" WIDTH
 STA. 17+50 TO STA. 18+28
 STA. 20+00 TO STA. 21+50
 STA. 21+50 TO STA. 22+00 TRAN. FROM PROPOSED 24'-0" WIDTH TO EXISTING WIDTH



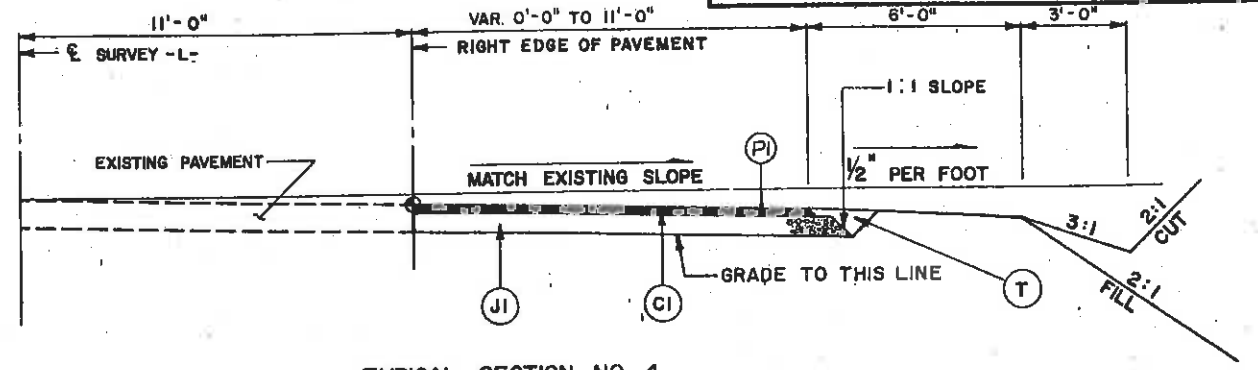
TYPICAL SECTION NO. 2

USE TYPICAL SECTION NO. 2 FROM: STA. 14+65± TO STA. 22+90± ON DETOUR



TYPICAL SECTION NO. 3

USE TYPICAL SECTION, NO. 3 FROM: STA. 18+28 TO STA. 20+00



TYPICAL SECTION NO. 4

USE TYPICAL SECTION NO. 4 FROM:
 STA. 12+00.90 TO STA. 14+65±
 STA. 22+90± TO STA. 24+74.46
 ON DETOUR

PAVEMENT SCHEDULE	
C1	PROP APPROX. 1" BIT. CONC. SURFACE COURSE, TYPE 1-1, AT AN AVERAGE RATE OF 110 LBS. PER SQ. YD.
C2	PROP APPROX. 2" BIT. CONC. SURFACE COURSE, TYPE 1-1, AT AN AVERAGE RATE OF 110 LBS. PER SQ. YD. IN EACH OF TWO LAYERS.
C3	PROP VAR. DEPTH BIT. CONC. SURFACE COURSE, TYPE 1-1, AT AN AVERAGE RATE OF 110 LBS. PER SQ. YD. PER 1" DEPTH TO BE PLACED IN LAYERS NOT TO EXCEED 1/2" IN DEPTH.
E2	PROP APPROX. 6" BIT. CONC. BASE COURSE, TYPE HB, AT AN AVERAGE RATE OF 330 LBS. PER SQ. YD. IN EACH OF TWO LAYERS.
J1	PROP 8" AGGREGATE BASE COURSE
L	SUBGRADE TO BE STABILIZED WITH 200 LBS. PER SQ. YD. OF STABILIZER AGGREGATE MIXED WITH THE TOP 3" OF SUBGRADE SOIL AT LOCATIONS DIRECTED BY THE ENGINEER.
PI	PRIME COAT AT THE RATE OF .35 GAL. PER SQ. YD.
T	EARTH MATERIAL

